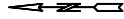




BASEMAP REFERENCE

1. HIGH RESOLUTION ORTHOMAGERY CAPTURED BY CE&G ON 08 AUGUST 2022.

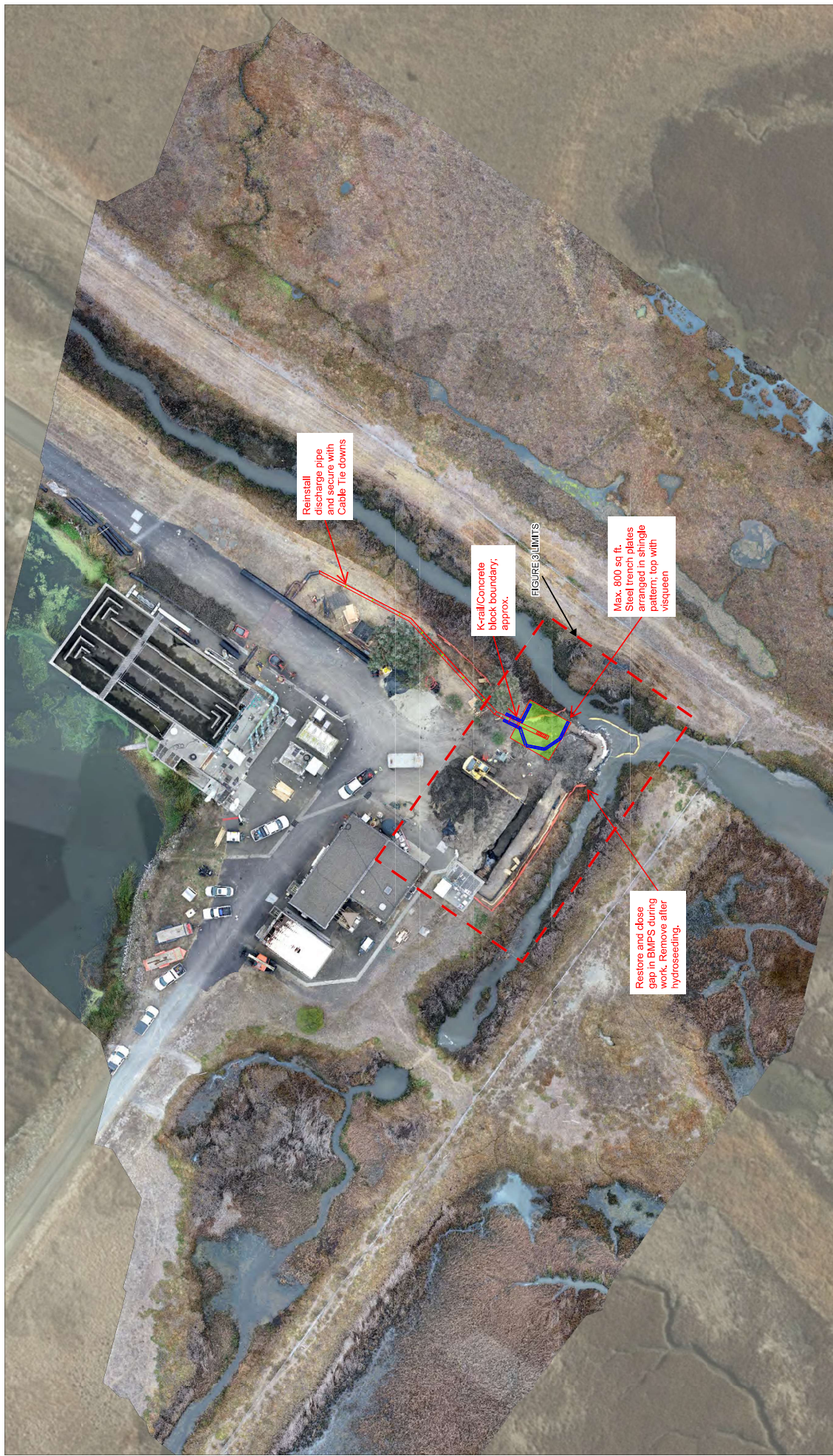


785 Ygnacio Valley Rd.
Walnut Creek, CA, 94596
www.ceandg.com
Phone: (925) 935-9771

ELLIS CREEK OUTFALL RELOCATION PROJECT
3000 FALLS DRIVE
PETALUMA, CALIFORNIA

PRECONSTRUCTION

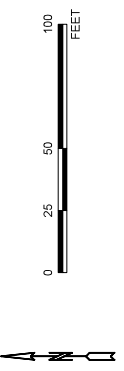
220550 OCTOBER 2022 FIGURE 1



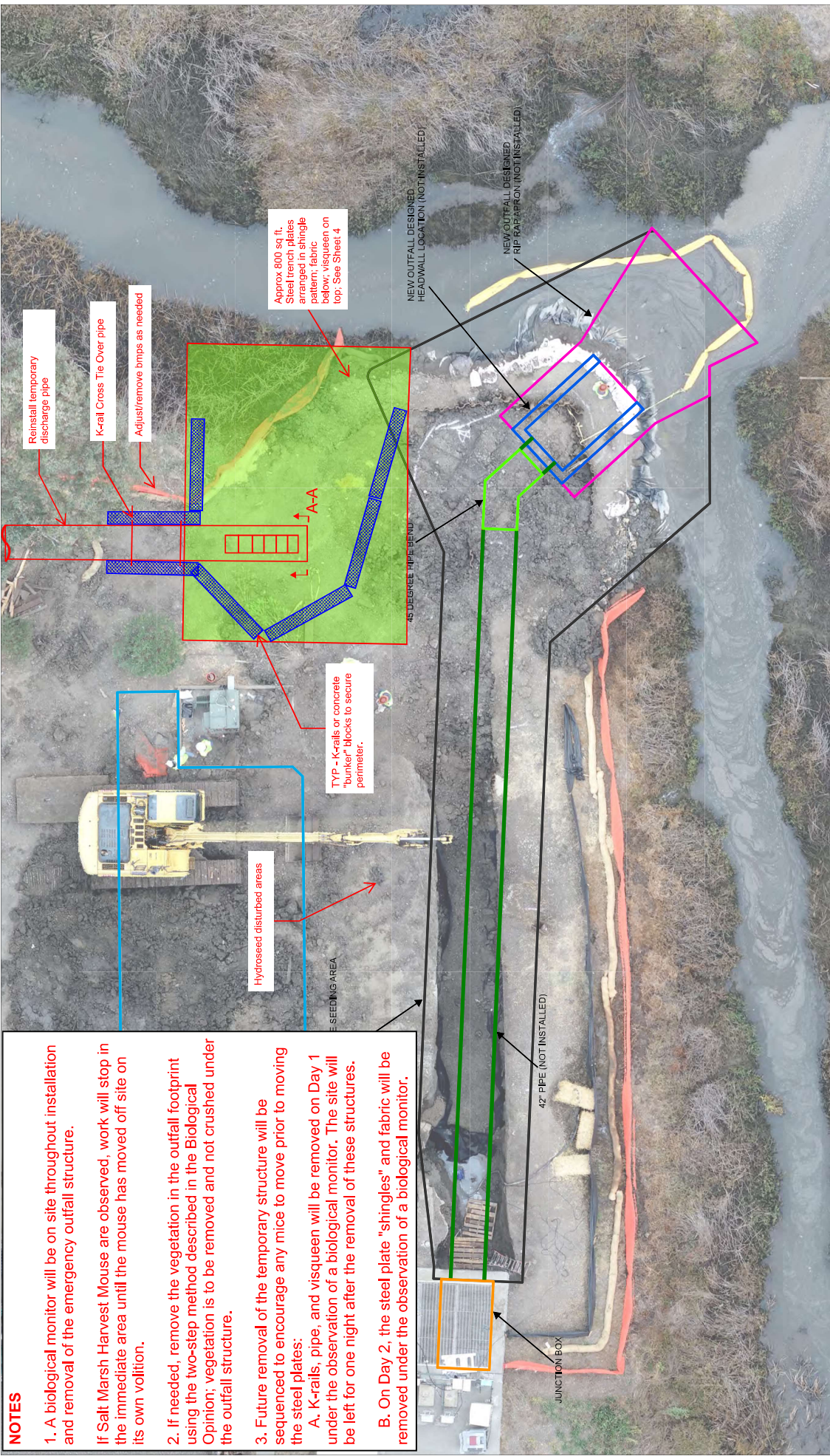
ELLIS CREEK OUTFALL RELOCATION PROJECT
3000 CALLESS DRIVE
PETALUMA, CALIFORNIA
Temporary Outfall Re-stabilization Overlay
Edits By - City of Petaluma

785 Gracido Valley Rd.
Wheat Creek, CA, 94586
www.ce&g.com
Phone: (925) 935-9771

CE&G
CAL ENGINEERING & GEOLOGY



BASEMAP REFERENCE
1. HIGH RESOLUTION ORTHOMAGERY CAPTURED BY CE&G ON 04 OCTOBER 2022.



NOTES

1. A biological monitor will be on site throughout installation and removal of the emergency outfall structure.

If Salt Marsh Harvest Mouse are observed, work will stop in the immediate area until the mouse has moved off site on its own volition.

2. If needed, remove the vegetation in the outfall footprint using the two-step method described in the Biological Opinion; vegetation is to be removed and not crushed under the outfall structure.

3. Future removal of the temporary structure will be sequenced to encourage any mice to move prior to moving the steel plates:

A. K-rails, pipe, and visqueen will be removed on Day 1 under the observation of a biological monitor. The site will be left for one night after the removal of these structures.

B. On Day 2, the steel plate "shingles" and fabric will be removed under the observation of a biological monitor.

BASEMAP REFERENCE

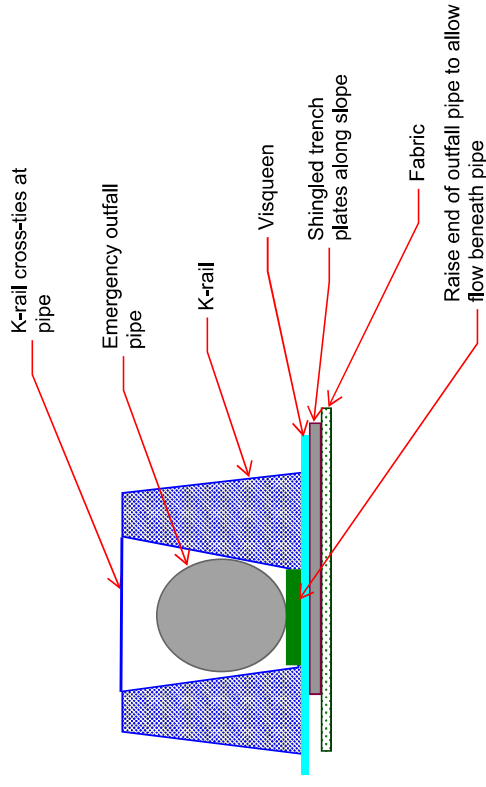
1. HIGH RESOLUTION ORTHOMAGERY CAPTURED BY CE&G ON 04 OCTOBER 2022.
2. CAD FEATURES IMPORTED FROM CAD FILE 11227516-XC_BASE.



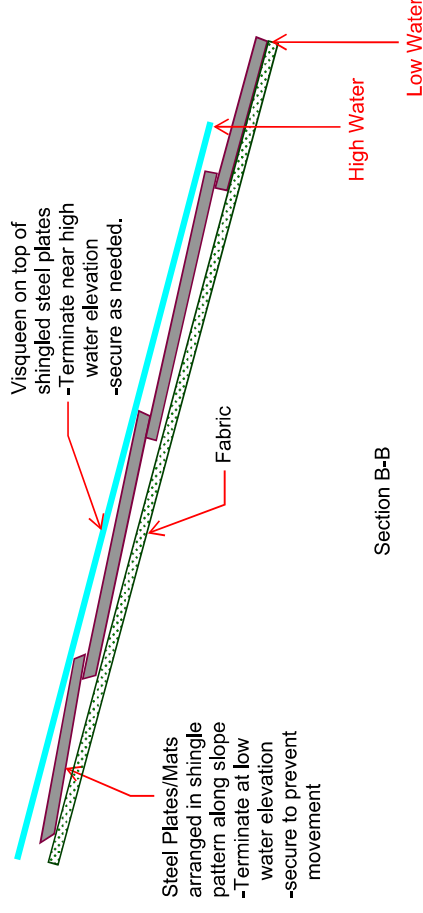
785 Ygnacio Valley Rd.
Walnut Creek, CA, 94596
www.ceandg.com
Phone: (925) 935-9771

ELLIS CREEK OUTFALL RELOCATION PROJECT
3880 FAIRFAX DRIVE
PETALUMA, CALIFORNIA

Temporary Outfall Re-stabilization Overlay
Edits By - City of Petaluma



Section A-A



Section B-B

ELLIS CREEK WATER RECYCLING FACILITY

EMERGENCY OUTFALL REINSTALL

SECTIONS